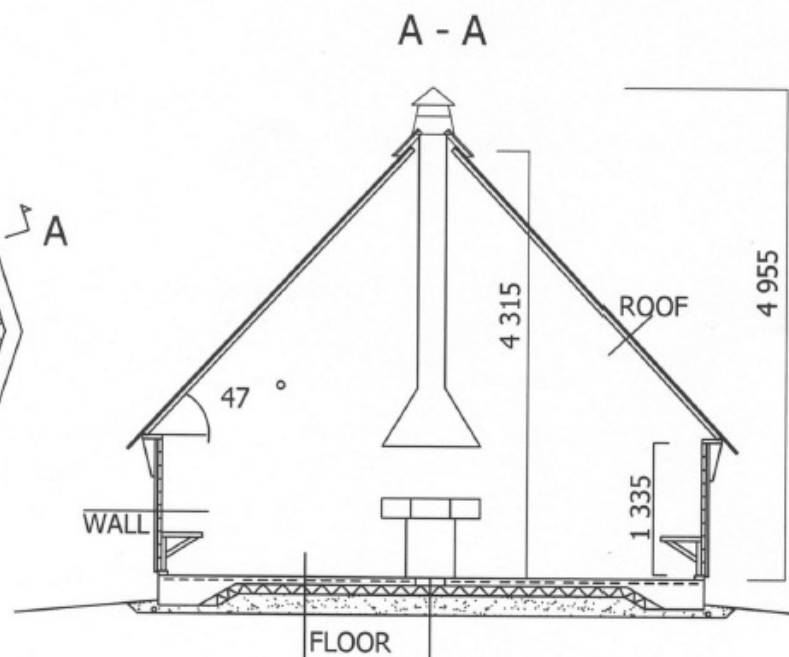
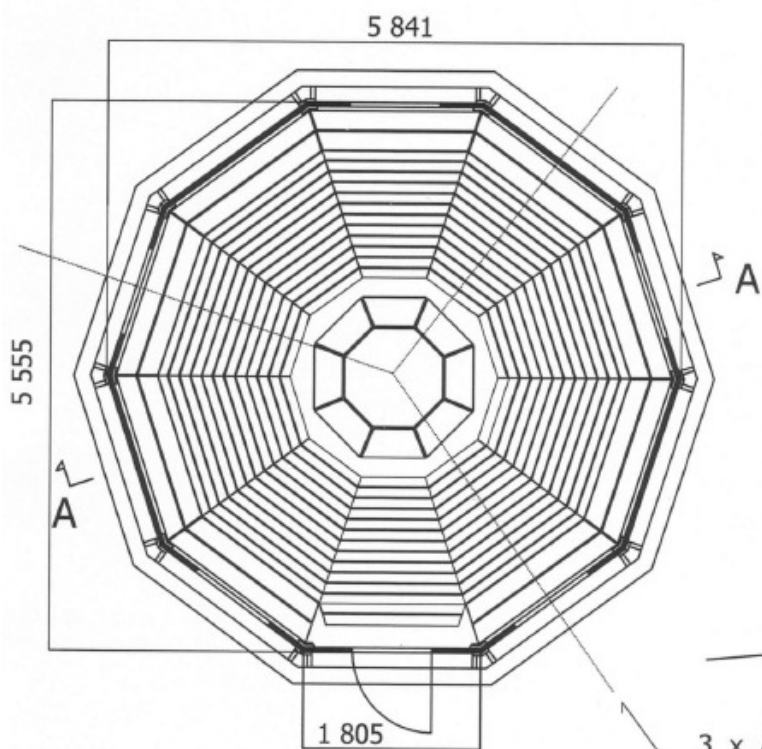
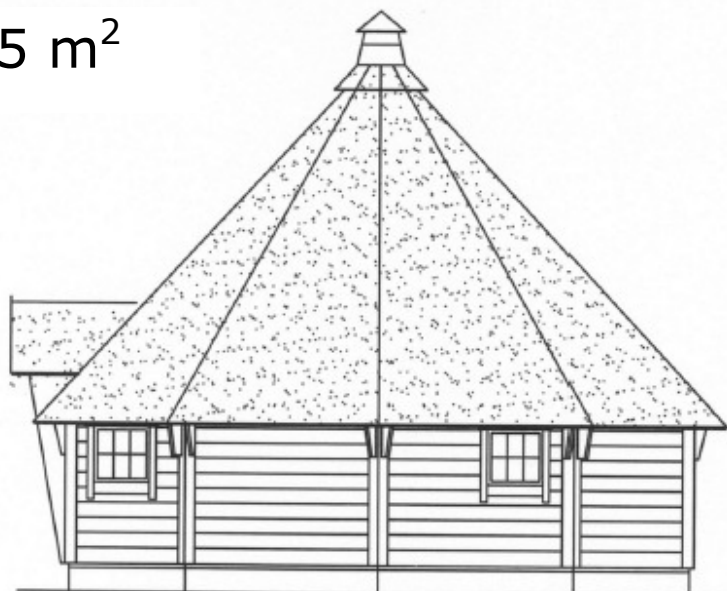
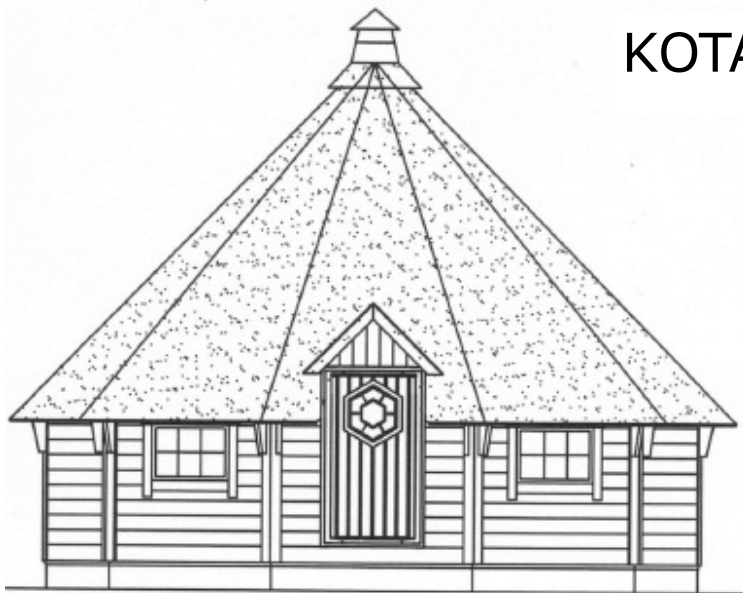


KOTA 25 m²



3 x AIR PIPES FOR GRILL
(ventilation duct)

ROOF

Roof felt
Panel 18 x 145
Roof trunk 95 x 45

WALL

Timber panel 45 x 145

FLOOR

Concrete 80 - 100 mm
Net 4 150 B 500 V
Cellular plastic 100 mm
Sealed gravel 200 mm (0-16 mm)

Weatherproofed base frame 45 x 95
(dampness insulation)